



# GMT MONTHLY MEMBERSHIP PROGRESS REPORT

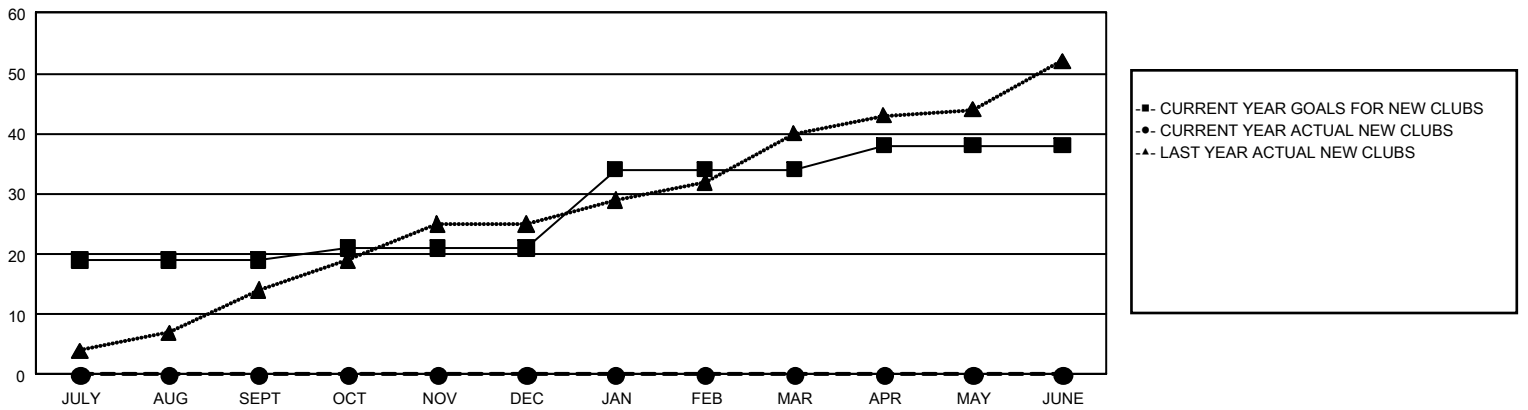
## GAT Constitutional Area 5 - Korea

Results as of: 7/31/2025

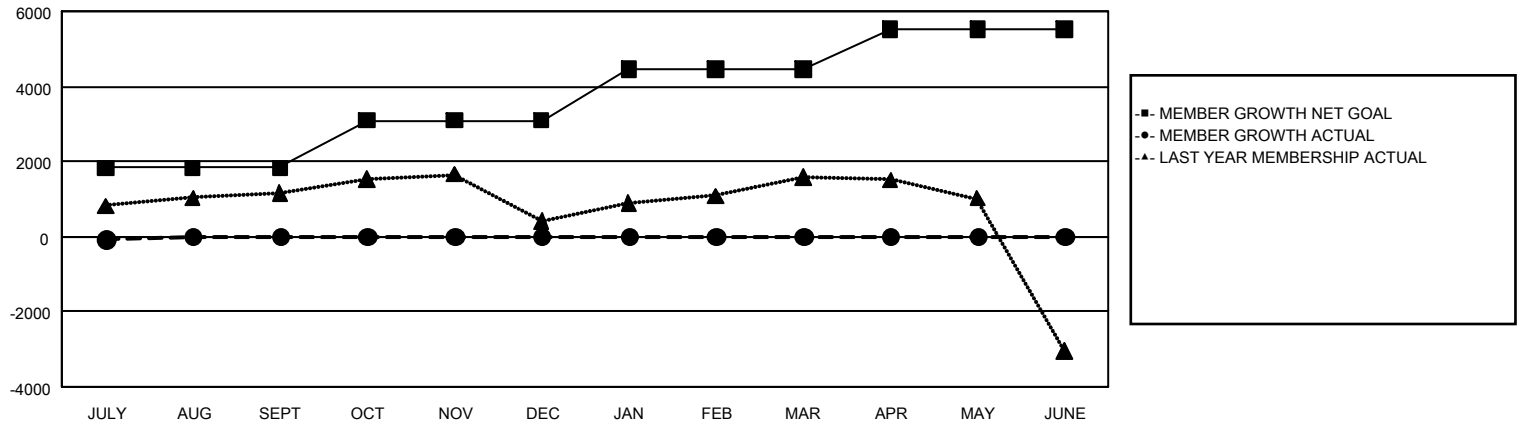
REPORT DOES NOT INCLUDE CLUBS IN UNDISTRICTED AREAS.

Clubs				Members			
RESULTS FOR 2025-2026				RESULTS FOR 2025-2026			
QUARTER	NEW CLUB GOAL	NEW CLUBS	DROPPED CLUBS	QUARTER	MEMBER GROWTH NET GOAL	MEMBER GROWTH ACTUAL	DROPPED MEMBERS ACTUAL (including transfers)
JULY/AUG/SEPT	19	0	6	JULY/AUG/SEPT	1,828	2,287	2,122
OCT/NOV/DEC	2	0	0	OCT/NOV/DEC	1,256	0	0
JAN/FEB/MAR	13	0	0	JAN/FEB/MAR	1,363	0	0
APR/MAY/JUNE	4	0	0	APR/MAY/JUNE	1,085	0	0

GOALS AND ACTUAL NEW CLUBS CUMULATIVE



GOALS AND ACTUAL MEMBERS CUMULATIVE



DROPPED CLUBS: 6

### DROPPED MEMBERS

DECEASED	20
CLUB CANCELLED	13
OTHER	2,089
TOTAL	2,122

646 CLUBS OF 2,005 ADDED 1 OR MORE NEW MEMBERS

[CLICK HERE FOR CUMULATIVE MEMBERSHIP DATA](#)

### GENDER DISTRIBUTION

MALE	49,410 (73.46%)
FEMALE	17,841 (26.53%)

TOTAL FAMILY UNIT MEMBERS	2,820
FAMILY MEMBERS PAYING HALF DUES	1,605